

The image features a dark blue background with a white geometric pattern of intersecting lines forming various shapes like triangles and hexagons. A dark blue rectangular area is positioned in the center, containing the text 'HADY MEISER EGYPT' in white, bold, uppercase letters. The text is reflected below it in a lighter blue, semi-transparent font.

**HADY MEISER EGYPT**



**[Grating] n:**

*The art of making a firm surface out of almost nothing*

*Try asking non-experts what a grating is. "A grating?!", most of them will reply, "a grating is a kind of floor, on which you can stand quite safely. But when you look down, you get the feeling you're standing in mid-air".*

*Indeed, more than 80% of any grating does exist of holes! We simply exploit the fact that a strip of metal positioned perpendicularly and anchored securely can carry a substantial load.*

*Meiser grating is acknowledged by trade specialists to be one of the best products of its kind in Europe. It's a fair assessment, we feel, and part of the reason is undoubtedly the committed work of our planning department and our reliable delivery dates.*

*But why don't you see for yourself?*

The Functional Advantage .....	1
References .....	3
Our Products	
Anti-skid Gratings .....	5
Fastening and Safety Elements .....	5
Shelf Gratings .....	6
Staircase Installations .....	7
Press welded gratings .....	9
load tables for press welded gratings .....	11
Job References .....	15
Sales & distributions .....	21
Hady Meiser Egypt .....	23

### The Functional Advantage

*Any of a group of related actions contributing to a larger action.*

The functional advantages of grating are much more versatile than you may think.

Starting with a very firm surface. Compared to the amount of material that goes into them, gratings have an incredibly high statical quality.

A further advantage is that grating constructions can be assembled easily and quickly and dismantled, too if, for whatever reason, you wished to re-open the area used.

Another advantage – the “transparency” – perhaps takes getting used to.

If you combine grating floors with other kinds of covering, further advantages become clear.

*In the Plenary Hall of the (new) German Parliament in the (old) Reichstag building in Berlin, for example, Meiser gratings were used as the underfloor structure for a top quality covering. The entire area is air-conditioned from below. This also made it easy to wire up the German deputies’ desks with various telecom cables.*

Not only that: as parliamentary majorities change, so too can groups of seats be re-arranged without a hitch – thanks to the Meiser grating solution.



*Meiser produced gratings form the substructure to the Plenary Hall in the German Parliament housed in the Reichstag, Berlin.*



*Meiser grating. As flexible in its applications as inflexible bearing a load.*

**Hadji Meiser**

**1** Anti-skid grating on a work platform at L.N.G. EDECO



**2** Press welded grating as a trough cover at an oil drum warehouse in Cairo north power station



**3** Press welded grating used for a maintenance gangway and railing at Cairo airport



**4** Stainless steel anti-skid grating used to cover a spreader unit at a sewage treatment plant in General Motors



**5** Shelf grating with notched T-shaped banding at the Porsche High Rack Warehouse In American university



**6** Cairo Stadium



**7** Maintenance platforms for the Talk Tower in Lafarge (Egyptian Cement)

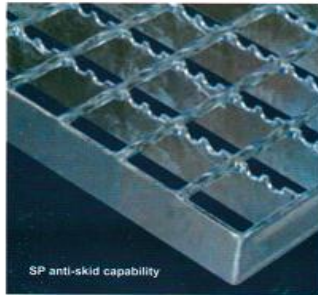


**8** Powder coated with press welded gratings used here to floor the stage at Mubrak Studios



**Anti-skid Gratings**

Normally all gratings have good non slip properties. However, they can be made even safer – particularly in areas where there is a risk of oil and grease spillages or when conditions are icy. Anti-skid gratings. So much safer, step by step.



**SP type anti-skid = R 10**  
 Bearing bars notched  
 Cross bars twisted

SP anti-skid capability

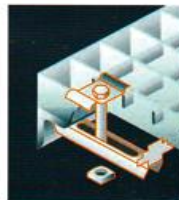
**Fastening and Safety Elements**



**Accessories**

Fixing Clips

Grating are supplied with our standard top fixing clip

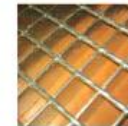
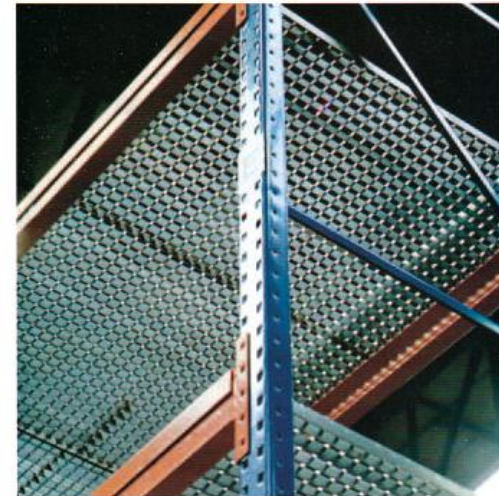


**Standard fastener**

- clip upper part
- clamp lower part
- hexagon screw M8
- square nut

**Shelf Gratings**

Used in the construction of high rack systems, grating based shelves have key advantages compared to other shelf systems. Apart from the high statical values of grating one great benefit is that you can see what is on the shelves from underneath. Another significant benefit is that in the event of a fire starting the sprinkler system will be able to get water through to the seat of the fire. When it comes to producing the shelves, we suggest that angle collars or special notchings be specified: as they are useful as extra-high banding and stop things falling off the shelf.



**Angle collar**

Angles can be welded on to one or several edges. Angle height should be at least the same as the bearing bar.



**Notching**

Special notchings with extra-high banding in the deposit area.

## STAIRCASE INSTALLATIONS

The manufacture of steel staircases requires a high degree of flexibility and craftsmanship. And so we integrate these factors with cost efficient production to offer you the customer solutions which are at once attractive and affordable.

We consider a solution successful only if it meets current regulations and if it contributes significantly to the overall aesthetic effect.

Spiral staircase Winding staircase Straight flight staircase



Golden Tex  
(Eng. Ahmed Arafa)

Canadian University  
(6<sup>th</sup> of October)



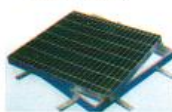
La Farage  
(Egyptian Cement)



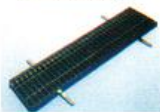
Hinged Pit-Grating



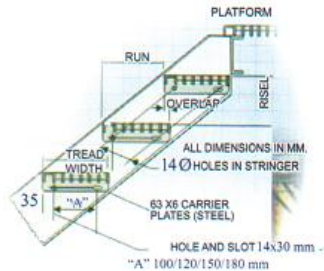
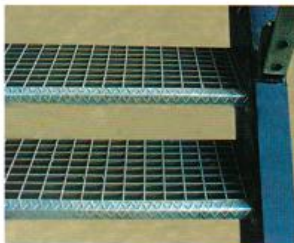
Sump Grating



Trench Grating



Spiral staircase



Staircase users are probably more interested in the quality of the steps than say, the engineering skills that went into the manufacture.

Outdoors, it is advisable to use materials which can withstand variable weather conditions and provide the required anti-slip protection whether wet, icy or snowy.

Indoors, the designer or the developer has more opportunity to experiment with different designs and materials – all depending on taste and the architectural concept.

### Example 1:

Grating 30 x 30 in the anti-skid design galvanised or stainless steel.

### Example 2:

Durbar galvanised or stainless steel.

In addition to step tread design, the railing is important to the general appearance as well.

For example:

### A1

Handrail and posts made of steel tubing 42 or 48 mm in diameter, the binding bar of 30 x 8 mm flat bar and the rods of steel round bar 12 mm in diameter.

### B1

**TREAD** A panel of grating having carriers with or without nosing attached by welding, designs specially to serve as stair tread.

### B2

**NOSING** Section member serving the front or the leading edge of a stair tread or the gratings at the head of stair.

Examples of steps



Examples of barriers



**PRESS WELDED GRATING**

Meiser press welded gratings are produced from steel. The bearing bars and the twisted square cross bars are cut to grating size before the cross bars are locked into the bearing bars at a pressure of 1000 kN and – simultaneously– electrically welded at 2500 KVA. into one unit.

In combination with welded cross bars, non-attenuated bearing bars make for high torsion rigidity.

Press welded gratings are banded with flat bars which, as a rule, will have the same cross section as the bearing bar.

Once social form of press welded grating is offshore grating (O-SP-SS)

Due to the way bearing bars are profiled, press welded gratings have a much enhanced plain capability

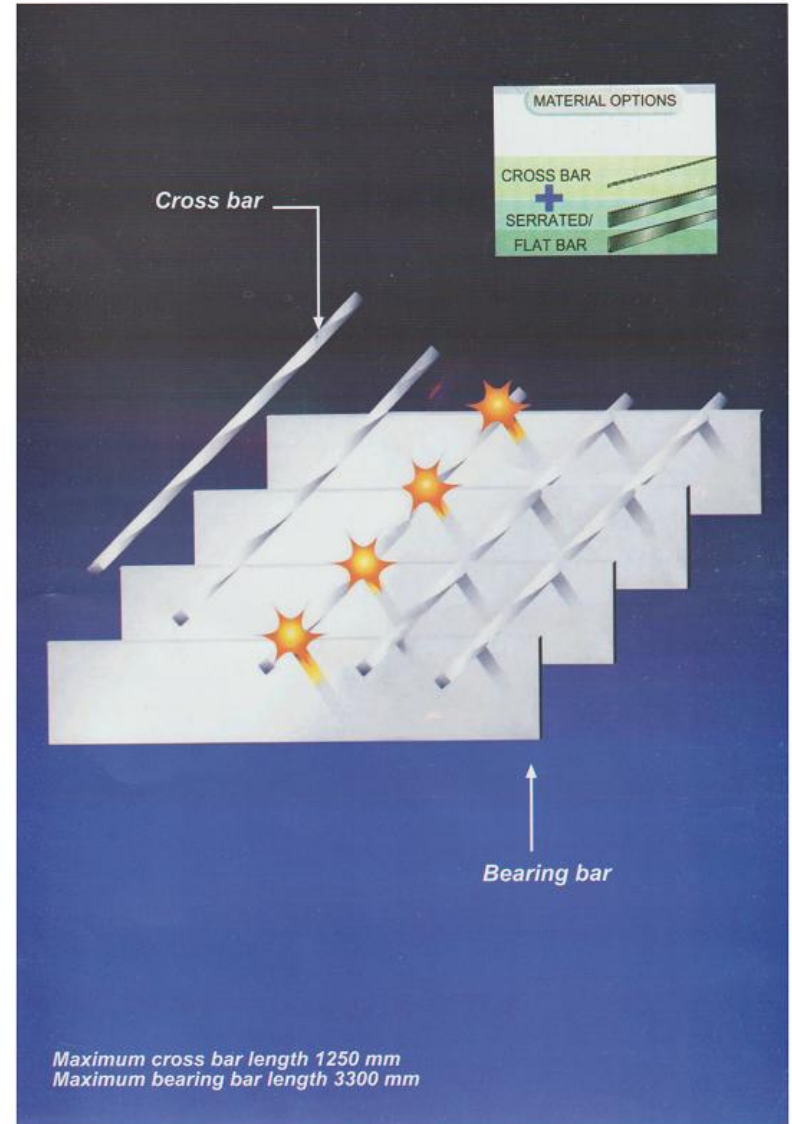
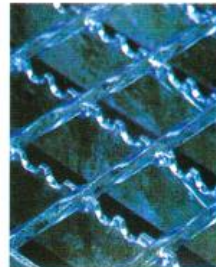
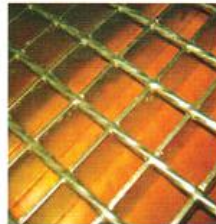


PLAIN

Due to the way bearing bars are profiled, press welded gratings have a much enhanced anti-skid capability



SERRATED



# LOAD TABLES FOR PRESS WELDED GRATING

## POTISSIMUM® ELECTROFUSED GRATING

### LOADING TABLE



CONVERSION FACTOR 1 KG = 9.81 N

MESH mm	CUD Bearing bar mm	CUD (D/mm) (F/mm)	Net span between supports MM																					
			300	400	500	600	700	800	900	1000	1100	1200	1300	1400	1500	1600	1700	1800	1900	2000				
34 X 76	#25 x 2	C/D	0.10	0.12	0.15	0.17	0.20	0.23	0.27	0.31	0.35	0.40	0.45	0.50	0.55	0.60	0.65	0.70	0.75	0.80	0.85	0.90	0.95	1.00
		F/C	17.1	15.4	0.64	0.54	0.31	0.64	1.18	2.07	3.31	5.06	7.31	10.06	13.31	17.06	21.31	26.06	31.31	37.06	43.31	50.06	57.31	65.06
	#30 x 2	C/D	0.10	0.12	0.15	0.17	0.20	0.23	0.27	0.31	0.35	0.40	0.45	0.50	0.55	0.60	0.65	0.70	0.75	0.80	0.85	0.90	0.95	1.00
		F/C	19.9	18.0	0.47	0.46	0.32	0.46	0.89	1.38	1.91	2.48	3.08	3.71	4.38	5.08	5.81	6.58	7.38	8.21	9.08	9.98	10.91	11.88
	#40 x 2	C/D	0.10	0.12	0.15	0.17	0.20	0.23	0.27	0.31	0.35	0.40	0.45	0.50	0.55	0.60	0.65	0.70	0.75	0.80	0.85	0.90	0.95	1.00
		F/C	25.4	23.6	0.33	0.33	0.23	0.33	0.64	0.98	1.38	1.84	2.33	2.84	3.38	3.94	4.54	5.18	5.84	6.54	7.28	8.04	8.84	9.68
	#25 x 3	C/D	0.10	0.12	0.15	0.17	0.20	0.23	0.27	0.31	0.35	0.40	0.45	0.50	0.55	0.60	0.65	0.70	0.75	0.80	0.85	0.90	0.95	1.00
		F/C	28.4	22.5	0.17	0.16	0.16	0.24	0.30	0.37	0.45	0.54	0.64	0.75	0.87	0.99	1.12	1.26	1.41	1.57	1.74	1.92	2.11	2.31
	#30 x 3	C/D	0.10	0.12	0.15	0.17	0.20	0.23	0.27	0.31	0.35	0.40	0.45	0.50	0.55	0.60	0.65	0.70	0.75	0.80	0.85	0.90	0.95	1.00
		F/C	27.6	26.6	0.49	0.49	0.34	0.49	0.98	1.47	1.97	2.50	3.07	3.67	4.29	4.94	5.62	6.34	7.09	7.87	8.68	9.52	10.39	11.29
	#40 x 3	C/D	0.10	0.12	0.15	0.17	0.20	0.23	0.27	0.31	0.35	0.40	0.45	0.50	0.55	0.60	0.65	0.70	0.75	0.80	0.85	0.90	0.95	1.00
		F/C	35.6	34.7	0.89	0.89	0.64	0.89	1.42	1.94	2.53	3.20	3.91	4.65	5.42	6.22	7.05	7.91	8.80	9.72	10.67	11.65	12.66	13.69
#50 x 3	C/D	0.10	0.12	0.15	0.17	0.20	0.23	0.27	0.31	0.35	0.40	0.45	0.50	0.55	0.60	0.65	0.70	0.75	0.80	0.85	0.90	0.95	1.00	
	F/C	43.6	42.7	1.50	1.50	1.04	1.50	2.02	2.68	3.41	4.20	5.04	5.94	6.89	7.88	8.91	9.97	11.06	12.18	13.33	14.51	15.72	16.96	18.23
#30 x 4	C/D	0.10	0.12	0.15	0.17	0.20	0.23	0.27	0.31	0.35	0.40	0.45	0.50	0.55	0.60	0.65	0.70	0.75	0.80	0.85	0.90	0.95	1.00	
	F/C	36.9	34.3	0.94	0.94	0.64	0.94	1.32	1.80	2.30	2.84	3.43	4.06	4.73	5.44	6.18	6.94	7.73	8.55	9.40	10.28	11.19	12.13	13.09
#40 x 4	C/D	0.10	0.12	0.15	0.17	0.20	0.23	0.27	0.31	0.35	0.40	0.45	0.50	0.55	0.60	0.65	0.70	0.75	0.80	0.85	0.90	0.95	1.00	
	F/C	47.5	44.9	1.40	1.40	0.98	1.40	1.94	2.53	3.20	3.91	4.65	5.42	6.22	7.05	7.91	8.80	9.72	10.67	11.65	12.66	13.69	14.75	
#50 x 4	C/D	0.10	0.12	0.15	0.17	0.20	0.23	0.27	0.31	0.35	0.40	0.45	0.50	0.55	0.60	0.65	0.70	0.75	0.80	0.85	0.90	0.95	1.00	
	F/C	56.1	55.5	2.26	2.26	1.54	2.26	3.17	4.18	5.29	6.49	7.78	9.16	10.64	12.21	13.88	15.64	17.49	19.43	21.46	23.58	25.79	28.08	30.45
#60 x 4	C/D	0.10	0.12	0.15	0.17	0.20	0.23	0.27	0.31	0.35	0.40	0.45	0.50	0.55	0.60	0.65	0.70	0.75	0.80	0.85	0.90	0.95	1.00	
	F/C	66.4	66.9	3.37	3.37	2.26	3.37	4.68	6.18	7.84	9.56	11.34	13.18	15.08	17.04	19.06	21.14	23.28	25.48	27.74	30.06	32.44	34.88	37.37
#25 x 5	C/D	0.10	0.12	0.15	0.17	0.20	0.23	0.27	0.31	0.35	0.40	0.45	0.50	0.55	0.60	0.65	0.70	0.75	0.80	0.85	0.90	0.95	1.00	
	F/C	35.4	35.4	0.86	0.86	0.60	0.86	1.27	1.70	2.15	2.63	3.14	3.68	4.24	4.83	5.44	6.07	6.73	7.42	8.13	8.87	9.64	10.43	11.24
#30 x 5	C/D	0.10	0.12	0.15	0.17	0.20	0.23	0.27	0.31	0.35	0.40	0.45	0.50	0.55	0.60	0.65	0.70	0.75	0.80	0.85	0.90	0.95	1.00	
	F/C	41.9	41.9	1.32	1.32	0.94	1.32	1.90	2.58	3.38	4.27	5.20	6.18	7.20	8.26	9.36	10.49	11.65	12.84	14.06	15.31	16.58	17.88	19.20
#40 x 5	C/D	0.10	0.12	0.15	0.17	0.20	0.23	0.27	0.31	0.35	0.40	0.45	0.50	0.55	0.60	0.65	0.70	0.75	0.80	0.85	0.90	0.95	1.00	
	F/C	55.1	55.1	2.02	2.02	1.42	2.02	2.85	3.81	4.89	6.00	7.14	8.31	9.52	10.77	12.06	13.38	14.74	16.13	17.55	19.00	20.48	22.00	23.54

Material: Steel Fe 360/B - UNI EN 10025

The types in red have a quicker delivery than the others.

\* Weight refers to framed and hot-dip galvanised panels.



### Potissimum Electrofused grating

Loading Table (Kg = 9.81 N)

MESH mm	CUD Bearing (mm)	Weight (Kg/m²)	Net span between supports MM																						
			300	400	500	600	700	800	900	1000	1100	1200	1300	1400	1500	1600	1700	1800	1900	2000					
25 x 3	C/D	14.81	8350	3750	2740	2070	1460	1000	610	310	480	360	300	260	220	180	160	130	130	130	130	130	130	130	
	F/C	26.40	24.40	0.63	0.07	1.58	2.28	3.10	4.00	4.96	5.90	6.80	7.70	8.50	9.30	10.10	10.90	11.70	12.50	13.30	14.10	14.90	15.70	16.50	17.30
30 x 3	C/D	18.00	10500	4700	3400	2500	1700	1100	650	350	550	420	350	300	250	200	180	150	150	150	150	150	150	150	150
	F/C	30.30	28.90	0.76	0.11	1.99	2.84	3.81	4.87	5.90	6.90	7.90	8.90	9.90	10.90	11.90	12.90	13.90	14.90	15.90	16.90	17.90	18.90	19.90	20.90
40 x 3	C/D	38200	21500	13700	9600	6600	4300	2800	1600	900	2800	2000	1600	1300	1000	800	700	600	500	400	300	200	100	100	100
	F/C	30.30	37.00	0.35	0.83	1.42	1.94	2.53	3.20	3.96	4.72	5.48	6.24	7.00	7.76	8.52	9.28	10.04	10.80	11.56	12.32	13.08	13.84	14.60	15.36
30 x 4	C/D	26800	16100	10200	6500	4200	2700	1600	900	500	1600	1100	800	600	500	400	300	200	100	100	100	100	100	100	100
	F/C	38.50	37.50	0.47	0.84	1.32	1.80	2.39	3.37	4.27	5.00	5.50	6.00	6.50	7.00	7.50	8.00	8.50	9.00	9.50	10.00	10.50	11.00	11.50	12.00
40 x 4	C/D	62000	38000	23000	14000	8500	5200	3000	1700	1000	500	300	200	150	100	80	70	60	50	40	30	20	10	10	10
	F/C	51.40	48.50	0.55	0.83	1.24	1.68	2.15	2.65	3.36	3.98	4.79	5.69	6.50	7.00	7.50	8.00	8.50	9.00	9.50	10.00	10.50	11.00	11.50	12.00
50 x 4	C/D	144000	84000	50000	29000	17000	10000	6000	3500	2000	1000	600	400	300	200	150	100	80	70	60	50	40	30	20	10
	F/C	61.10	61.30	0.78	1.14	1.76	2.38	3.10	3.96	4.96	5.96	6.96	7.96	8.96	9.96	10.96	11.96	12.96	13.96	14.96	15.96	16.96	17.96	18.96	19.96
38 x 5	C/D	59750	57900	34000	20000	12000	7000	4000	2200	1200	600	400	300	200	150	100	80	70	60	50	40	30	20	10	10
	F/C	59.75	57.95	0.42	0.78	1.10	1.65	2.20	2.80	3.40	4.00	4.60	5.20	5.80	6.40	7.00	7.60	8.20	8.80	9.40	10.00	10.60	11.20	11.80	12.40
35 x 5	C/D	32100	31000	18000	10000	6000	3500	2000	1100	600	300	200	150	100	80	70	60	50	40	30	20	10	10	10	10
	F/C	43.30	38.80	0.58	0.91	1.26	1.71	2.19	2.67	3.18	3.66	4.14	4.62	5.10	5.58	6.06	6.54	7.02	7.50	8.00	8.50	9.00	9.50	10.00	10.50
45 x 4	C/D	50900	51600	30000	17000	10000	6000	3500	2000	1100	600	400	300	200	150	100	80	70	60	50	40	30	20	10	10
	F/C	52.00	51.60	0.31	0.59	0.86	1.28	1.74	2.27	2.86	3.36	3.91	4.51	5.11	5.71	6.31	6.91	7.51	8.11	8.71	9.31	9.91	10.51	11.11	11.71
50 x 3	C/D	44400	43400	25000	14000	8000	4500	2500	1300	700	400	250	150	100	80	70	60	50	40	30	20	10	10	10	10
	F/C	44.40	43.40	0.21	0.31	0.45																			





## JOB REFERENCES

JOB REFERENCES FOR GRATING ( CEMENT SECTOR )			
S	QTY(m <sup>2</sup> )	NAME OF COMPANY	SPECIFICATION
1	7385	( Suez Cement Project )	
2	6785	( Egyptian Cement Project ) Line1	
3	8135	( Egyptian Cement Project ) Line2	* Pitch 30 x 50 mm
4	3700	( Egyptian Cement Project ) Line3	* Bearing Bar 30 x 3 mm
5	6700	( Egyptian Cement Project ) Line4 From Total QTY 6700 m2	* Cross Bar 5 mm (twisted)
6	6700	( Egyptian Cement Project ) Line5 From Total QTY 6700 m2	
7	6800	( El Amria Cement Project ) Line1	* Pitch 30 x 50 mm
			* Bearing Bar 30 x 3 mm
			* Cross Bar 5 mm (twisted)
8	6000	( Algeria Project ) Line 1	* Pitch 30 x 50 mm
			* Bearing Bar 30 x 3 mm
			* Cross Bar 5 mm (twisted)
9	1732	Cement Company	
10	1253	( Torah Cement Project )	
11	465	( Helwan Cement Project )	* Pitch 30 x 50 mm
12	6175	( Ouna Cement Project )	* Bearing Bar 30 x 3 mm
13	1800	El - Fahd Cement ( Domyeta Port )	* Cross Bar 5 mm (twisted)
14	1100	Asiout Cement ( Cemex )	
15	6800	SYRIAN CEMENT (LINE 1)	* Pitch 30 x 50 mm
16	2000	SINAI WHITE	* Bearing Bar 30 x 3 mm
17	900	( Asiout Cement Project )	* Cross Bar 5 mm (twisted)
18	12400	(LYBIA CEMENT PROJECT) LINE 1 - LINE 2	
19	6000	( Algeria project ) line 1	
20	6000	( Algeria project ) line2	* Pitch 30 x 50 mm
21	6000	( Algeria project ) line 3	* Bearing Bar 30 x 3 mm
22	6860	( Nigiria cement ) line 1	* Cross Bar 5 mm (twisted)
23	6860	(CIBA-White Cement )	
24	6800	( FUJAIRA )	
25	6800	( BAZIAN )	
26	7000	MISR BANI SWIF (LINE 1 )	* Pitch 30 x 50 mm
			* Bearing Bar 40 x 3 mm
			* Cross Bar 5 mm (twisted)
27	500	Tourah Cement.	* Pitch 30 x 38 mm
			* Bearing Bar 30 x 3 mm
			* Cross Bar 5 mm (twisted)
JOB REFERENCE FOR GRATING ( FERTILIZERS SECTOR )			
S	QTY	NAME OF COMPANY	SPECIFICATION
1	8335	Project (abu Qir - [petrochemical project ]	
2	7230	( Egeptian Fertilizers ) first factory	* Pitch 30 x 38 mm
3	800	Project ( abu Madhy - petrochemical project )	* Bearing bar 30 x 3 mm
4	1000	Tradco company	* Cross bar 5 mm
5	2000	Alex project ( Petrochemical Project JJ & P	( twisted )
6	3300	(cellulose project)	
7	7200	( Egyptian Fertilizers Co ) second factory	
8	7150	( Helwan for Fertilizers )	
9	850	( Egyptian Fertilizers + Helwan Fertilizers + Alex Fertilizers )	
10	7200	Alex Fertilizers	* Pitch 30 x 38 mm
11	810	Project ( Suez Fertilizers )	* Bearing bar 30 x 3 mm
12	970	Company ( Abu Qir 3)	* Cross bar 5 mm
13	730	( Egyptian Fertilizer + Helwan Fertilizer + Alex )	( twisted )
14	1250	( Alex Fertilizer )	
15	6380	( MOBCO )	
16	4500	( Al-Amonia Suez )	
17	13300	A Greum Fertilizer	
18	7500	Methanoul Fertilizer	
19	26500	Sorfert (algeria)	* Pitch 30 x 36 mm
			* Bearing Bar 30 x 3 mm
			* Cross Bar 5 mm (twisted)

JOB REFERENCES FOR GRATING ( ELECTRICITY SECTOR )			
S	QTY(m <sup>2</sup> )	NAME OF COMPANY	SPECIFICATION
1	1020	( Safaga Electricity Station)	
2	6600	( Port Said Station )	* Pitch 30 x 38 mm
3	385	( Eastern Branch ) ( El Temsah Station )	* Bearing Bar 40 x 3 mm
4	250	Suez Electricity Station	* Cross Bar 5 mm (twisted)
5	1500	( Samalout Electricity Station )	
6	2000	( Sidi Knir Electricity Station )	* Pitch 30 x 38 mm
7	6560	( Different Projects )	* Bearing Bar 40 x 3 mm
8	1000	( Port Said Electricity Station - Civil )	* Cross Bar 5 mm (twisted)
9	1000	( El Ain El Sokhna Electricity Station - Civil )	* Pitch 30 x 38 mm
			* Bearing Bar 40 x 3 mm
			* Cross Bar 5 mm (twisted)
10	1700	( CAIRO NORTH POWER STATION) first stage	* Pitch 30 x 63.5 mm
			* Bearing Bar 32 x 5 mm serrated
			* Cross Bar 6 mm (twisted)
11	1000	( CAIRO NORTH POWER STATION) first stage	* Pitch 30 x 63.5 mm
			* Bearing Bar 30 x 4 mm serrated
			* Cross Bar 6 mm (twisted)
12	2500	( CAIRO NORTH POWER STATION)	* Pitch 30 x 63.5 mm
			* Bearing Bar 32 X 5 mm
			* Cross Bar 5 mm (twisted)
13	350	( ABO ZAABEL POWER STATION)	* Pitch 30 x 38 mm
			* Bearing Bar 30 X 3 mm
			* Cross Bar 5 mm (twisted)
14	700	WEST DELYA COMPANY ( KAFR ELDAWAR)	* Pitch 30 x 38 mm
15	300	( TOSHKA POWER STATION )	* Bearing Bar 30 X 3 mm
			* Cross Bar 5 mm (twisted)
16	8100	( WEST NUBARIA POWER STATION)	* Pitch 41 x 63.5 mm
17	300	A.W FOR CONTRACTING	* Bearing Bar 38 X 5 mm
18	300	( GIZA POWER STATION )	* Cross Bar 6 mm (twisted)
19	200	( Talkha power station )	* Pitch 40 x 100 mm
			* Bearing Bar 38 X 5 mm
			* Cross Bar 6 mm (twisted)
20	1700	( Cairo North Power Station )	* Pitch 30 x 100 mm
			* Bearing Bar 38 X 5 mm
			* Cross Bar 6 mm (twisted)
21	2100	( El Korimat Power Station )	* Pitch 30 x 100 mm
			* Bearing Bar 38 X 5 mm
			* Cross Bar 6 mm (twisted)
22	4200	( El - Tebeen Power Station )	* Pitch 30 x 100 mm
			* Bearing Bar 38 x 5 mm
			* Cross Bar 6 mm (twisted)
23	4000	( Nobarria Power Station 3 )	* Pitch 30 x 100 mm
			* Bearing Bar 38 x 5 mm
			* Cross Bar 6 mm (twisted)
24	4000	( El ATF Power Station )	
25	11000	Abou Qir Power Station	
26	4000	Ain Sokhna Power Station	* Pitch 30 x 100 mm
27	8000	Giza North Power Station	* Bearing Bar 38 x 5 mm
28	1000	Banha North Power Station	* Cross Bar 6 mm (twisted)
29	2300	Damietta North Power Station	
30	6400	New Capital Power Station	
31	4000	West Damietta Power Station	* Pitch 30 x 100 mm
32	4500	Asiout Power Station	* Bearing Bar 38 x 5 mm
33	6600	Pirulus Power Station	* Cross Bar 6 mm (twisted)
34	16200	Helwan Power Station	

## JOB REFERENCES

JOB REFERENCES FOR GRATING ( CONSTRUCTION SECTOR )			
S	QTY(m <sup>2</sup> )	NAME OF COMPANY	SPECIFICATION
1	2800	( The National Company for Iron & Steel )	* Pitch 30 x 38 mm * Bearing Bar 30 x 3 mm * Cross Bar 5 mm (twisted)
2	560	( El Sadat City Factory )	* Pitch 30 x 38 mm * Bearing Bar 30 x 3 mm * Cross Bar 5 mm (twisted)
3	800	( Drainage Project - El Gabal El Asfar )	* Pitch 30 x 50 mm * Bearing Bar 30 x 3 mm * Cross Bar 5 mm (twisted)
4	2400	( Mubarak Stadium )	* Pitch 30 x 38 mm * Bearing Bar 40 x 3 mm * Cross Bar 5 mm (twisted)
5	200	( El Ain El Sokhna Port )	* Pitch 30 x 50 mm * Bearing Bar 40 x 3 mm * Cross Bar 5 mm (twisted)
6	5000	( Different Projects )	* Pitch 30 x 38 mm * Bearing Bar 30 x 3 mm * Cross Bar 5 mm (twisted)
7	1200	( Ismailia Drainage )	* Pitch 30 x 38 mm * Bearing Bar 30 x 3 mm * Cross Bar 5 mm (twisted)
8	1400	El Gabal El Asfar Drainage - Contract 16 )	* Pitch 30 x 50 mm * Bearing Bar 30 x 3 mm * Cross Bar 5 mm (twisted)
9	385	( Asult Towers )	* Pitch 30 x 38 mm * Bearing Bar 30 x 3 mm * Cross Bar 5 mm (twisted)
10	2000	The American Company for Steel Industry ( Bashy's Sons )	* Pitch 30 x 38 mm * Bearing Bar 50 x 5 mm * Cross Bar 5 mm (twisted)
11	1020	( Different Projects )	* Pitch 30 x 38 mm * Bearing Bar 40 x 3 mm * Cross Bar 5 mm (twisted)
12	5000	( Different Projects )	* Pitch 30 x 50 mm * Bearing Bar 25 x 3 mm * Cross Bar 5 mm (twisted)
13	1500	( El Sweedy )	* Pitch 30 x 38mm * Bearing Bar 30 x 3 mm * Cross Bar 5 mm (twisted)
14	600	( El Ain El Sokhna Port )	* Pitch 30 x 38mm * Bearing Bar 30 x 3 mm * Cross Bar 5 mm (twisted)
15	400	N . C . C .	* Pitch 30 x 50 mm * Bearing Bar 32 x 5 mm * Cross Bar 5 mm (twisted)
16	2350	SUKARI GOLD MINES	* Pitch 30 x 50 mm * Bearing Bar 32 x 5 mm * Cross Bar 5 mm (twisted)

JOB REFERENCES FOR GRATING ( CARS & CARS PAINTING SECTOR )			
S	QTY	NAME OF COMPANY	SPECIFICATION
1	390	Ega Mercedes Company ( M.C.V.Factory - New Salhya)	* Pitch 30 x 38 mm * Bearing Bar 30 x 3 mm * Cross Bar 5 mm (twisted)
2	400	Arab American Cars Company	* Pitch 30 x 50 mm * Bearing Bar 30 x 3 mm * Cross Bar 5 mm (twisted)
3	200	Mia Company	* Pitch 30 x 50 mm * Bearing Bar 30 x 3 mm * Cross Bar 5 mm (twisted)

JOB REFERENCES FOR GRATING ( PETROL & DRILLING SECTOR )			
S	QTY(m <sup>2</sup> )	NAME OF COMPANY	SPECIFICATION
1	1200	Kh. Petroleum Company	Mesh 30 x 30 mm BB 30 X 3 mm Cross Bar 5 mm ( twisted )
2	2000	( Gasco Project )	Mesh 30 x 50 mm BB 40 X 3 mm Cross Bar 5 mm ( twisted )
3	970	M. ( Abou Qir 3 + 600 stairs )	Mesh 30 x 30 mm BB 30 X 3 mm Cross Bar 5 mm ( twisted )
4	800	( Abou Madhy Extensions )	Mesh 34 x 38 mm BB 40 X 3 mm Cross Bar 5 mm ( twisted )
5	12250	G. for Petroleum	Mesh 30 x 63 mm BB 25 X 4 mm Cross Bar 7 mm ( twisted )
6	18600	EDC	Mesh 30 x 63mm BB 30 x 4 mm & 25X5 mm ( serrated) Cross Bar 7 mm ( twisted )
7	750	Chinese Drilling Company	Mesh 30 x 63 mm BB 30 X 3 mm( serrated ) Cross Bar 5 mm ( twisted )
8	3200	Abo rdees. & Port Said	Mesh 30 x 50 mm BB 30 X 4 mm ( Serrated ) Cross Bar 6 mm ( Twisted )
9	550	Order from Apetche Petroleum	Mesh 30 x 63 mm BB 30 X 3 mm ( serrated ) Cross Bar 5 mm ( twisted )
10	200	El Haram for Drilling	Mesh 30 x 50 mm BB 25 X 5 mm ( serrated ) Cross Bar 5 mm ( twisted )

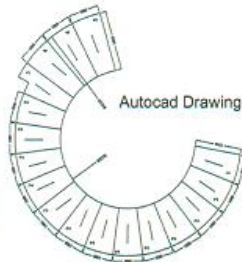
JOB REFERENCES FOR GRATING ( GAS SECTOR )			
S	QTY(m <sup>2</sup> )	NAME OF COMPANY	SPECIFICATION
1	8800 M2	( L.N.G EDCC )	* Pitch 30 x 63.5 mm * Bearing Bar 30 x 5 mm(SERRATED) * Cross Bar 6 mm (twisted)
2	2500 M2	( L.N.G DAMIETTA )	* Pitch 30 x 63.5 mm * Bearing Bar 25 x 5 mm(SERRATED) * Cross Bar 6 mm (twisted)
3	450 M2	U G D PORT SAID	* Pitch 30 x 63.5 mm * Bearing Bar 30 x 5 mm (SERRATED) * Cross Bar 5 mm (twisted)
4	440 M2	U G D DAMIETTA	* Pitch 30 x 63.5 mm * Bearing Bar 25 x 5 mm (SERRATED) * Cross Bar 5 mm (twisted)
5	1557 M2	BURULLUS GAZ CO.	* Pitch 30 x 100 mm * Bearing Bar 25 x 3 mm (SERRATED) * Cross Bar 8 mm (twisted)

## Manufacturing Excellence

### CUT-TO-SIZE GRATINGS

With advanced technology and engineering skills, an automated machine can produce straight and standard size panels, yet one must rely on the expertise and understanding of experts to produce customized circular and sector type gratings.

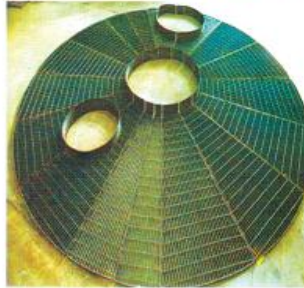
#### Cut-to-size panels



#### Cutout making machine



#### Completely finished circular type grating



UDC 62-703.4 (614.6): 621.311: 621.771: 622.84 DEUTSCHE NORM October 1992

Gratings  
Dimensions and loadbearing capacity  
**DIN 24 537**

Dimensions: Maße, Bezeichnung, Bemessung  
Supersedes February 1985 edition

In keeping with current practice in standards published by the International Organization for Standardization (ISO), a comma has been used throughout as the decimal marker.

Dimensions in mm

1 Scope and field of application  
This standard specifies the dimensions and...  
(Such as steel works, etc.)

Type of Document: Submittal

Contractor Code Number: H M E S U G E N 0 0 1 5 0 0 0 0 1  
Contract Number: 10067-CP-102  
Reference Classification: 9999-9-303-6500-0001

ORASCOM  
CONSTRUCTION INDUSTRIES

BESIX

For Contractor: Mohamed Abdel El Baher  
Signature: [Signature]

Kharafi National  
For Mechanical and Electrical Works

Simple Cycle Power Plant  
Contract No. 10067-CP-101

Ministry of Economic Planning  
General Management & D Division  
Industrial Services Department

Mechanical Testing Unit

Standard: Tensile Membranes

Test Results

Fig. 1 Connection Detail of the Grating

Span-Deflection Table of Concentrated Load (P) at 1/3 KN

Span (mm)	100	200
Deflection (mm)	2.7	3.0

**Certification**  
Awarded to:  
**HADY MEISER EGYPT**  
SHARMA, SAADOM, EL SHEIKH, HELWAN, EGYPT

Bureau Veritas Certification  
Bureau Veritas Certification certifies that the Management System of the above organization has been audited and found to be in accordance with the requirements of the management system standards detailed below.

STANDARD:  
**ISO 9001:2008**  
SCOPE OF CERTIFICATION:  
**MANUFACTURING OF AUTOMATICALLY WELDED PLAN AND SERRATED BAR GRATING, SPIRAL STAIR TREADS AND SLITTING COILS**

Approved Date: 10<sup>th</sup> December 2010

Valid until: 09<sup>th</sup> December 2013

Issue Date: 10<sup>th</sup> December 2010  
Certificate Number: 05010710

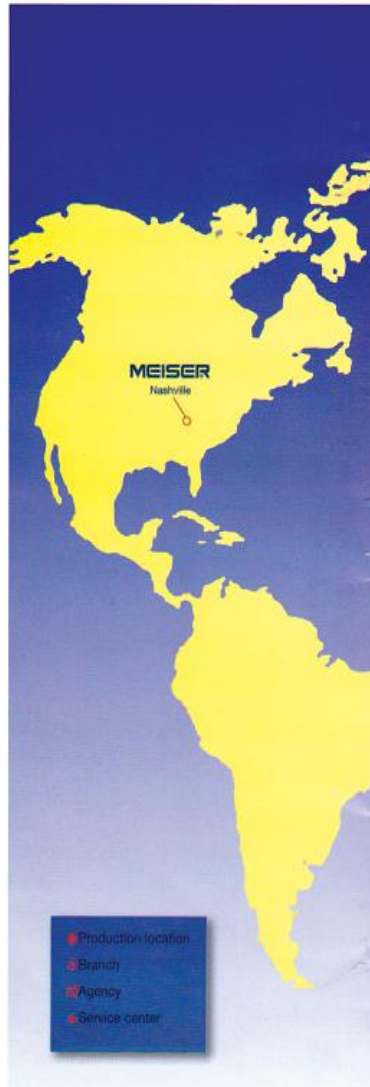
To keep as near to our customers as possible, we maintain our own production locations, branches and agencies in several European countries.

One of the tasks at these locations is, not least, to make sure that the Meiser service is well organised.

Apart from its two production locations in Germany, Meiser operates in Belgium, Hungary and Egypt.

There are agencies in Italy, Spain, Switzerland, Austria and Scandinavia.

There are branches in Britain, the Netherlands, France, Rumania, and Malaysia.



**Head Office**

2 Asma Fahmy St., - Heliopolis  
Cairo - Egypt

Tel. : +202- 241 75 822  
+202 - 229 03 879

**Factories And Sales**

El Shrouk Industrial Zone,  
Khanka, Kaliobia.

Tel. : +202- 446 04 273 - 4  
Fax : +202- 446 04 123  
+202- 446 98 047  
+202- 446 98 212

E-mail : [trabia.meiser@gmail.com](mailto:trabia.meiser@gmail.com)

: [trabia\\_meiser@hadymeisr.com](mailto:trabia_meiser@hadymeisr.com)

Website : [www.hadymeiser.com](http://www.hadymeiser.com)

